



REPORT

Groundwater Monitoring System Certification Addendum No. 1

*Martin Lake Steam Electric Station - PDP 5
Rusk County, Texas*

Submitted to:

Luminant Generation Company LLC

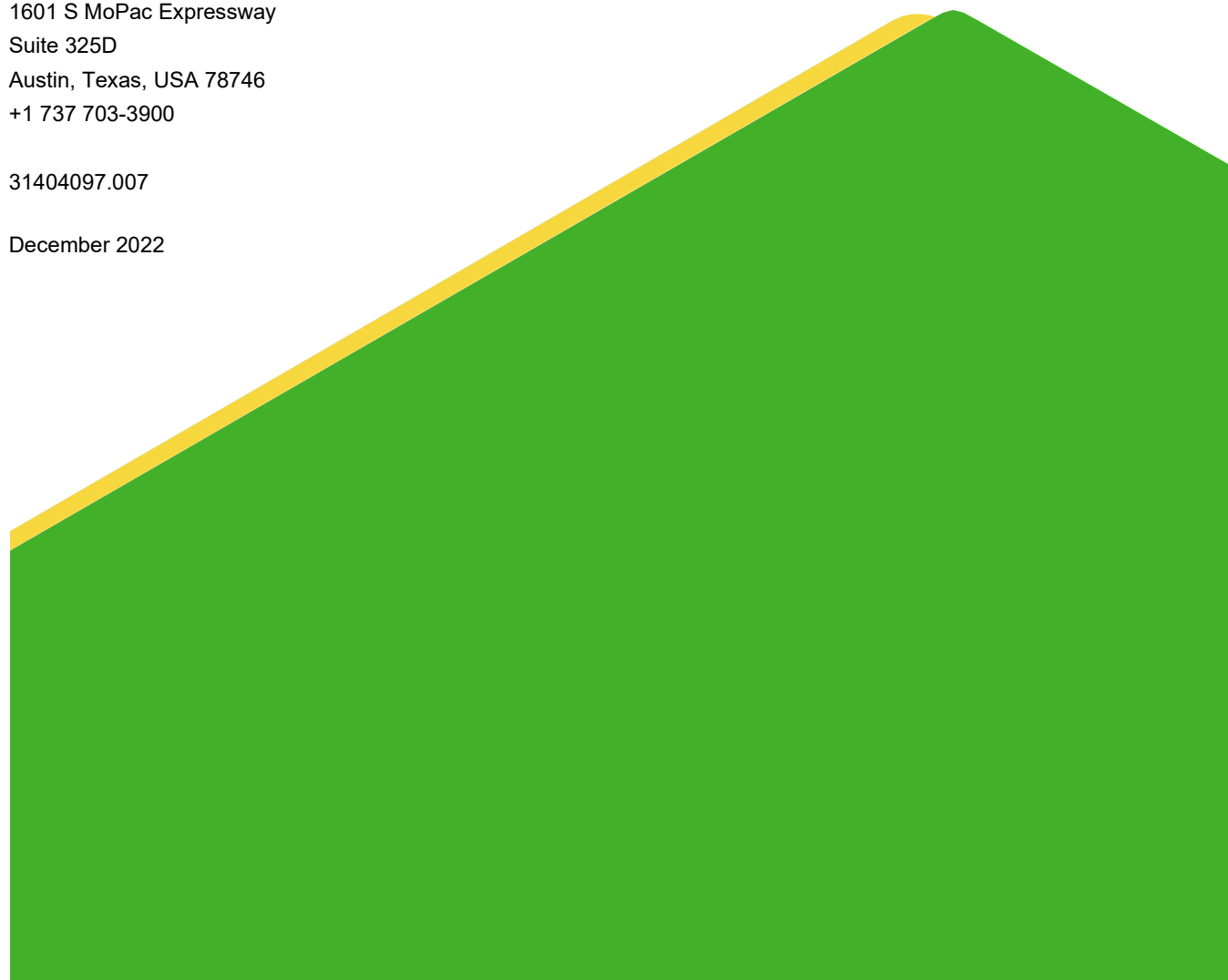
Submitted by:

WSP GOLDER

1601 S MoPac Expressway
Suite 325D
Austin, Texas, USA 78746
+1 737 703-3900

31404097.007

December 2022



PROFESSIONAL CERTIFICATION

This document and all attachments were prepared by WSP Golder under my direction or supervision in accordance with a system designed to assure that qualified personnel properly gather and evaluate the information submitted. Based on my inquiry of those persons directly responsible for gathering the information, the information submitted is, to the best of my knowledge and belief, true, accurate, and complete. I hereby certify that Addendum No.1 to the Groundwater Monitoring System Certification for the Permanent Disposal Pond 5 at the Martin Lake Steam Electric Station has been prepared in accordance with the requirements of 40 C.F.R. §257.91.



Patrick J. Behling, P.E.
Principal Engineer
WSP Golder
Texas Firm Registration No. 22771



Table of Contents

DOCUMENT REVISION RECORD ii

1.0 INTRODUCTION 1

2.0 SUMMARY OF UPDATED DOCUMENTS 1

3.0 REFERENCES 1

FIGURES

Figure 1 Original Cross Section Location Map (2017)

Figure 2 Updated Cross Section Location Map

Figure 3 Geologic Cross Section A – A'

Figure 4 Geologic Cross Section B – B'

DOCUMENT REVISION RECORD

Issue No.	Date	Details of Revisions
Revision 0	October 2017	Original Document
Addendum 1	December 2022	Includes the cross section location map that was missing from the original 2017 report, an updated cross section location map, and updated cross sections

1.0 INTRODUCTION

On behalf of Luminant Generation Company LLC (Luminant), WSP Golder (Golder) has prepared this Addendum No. 1 to the Groundwater Monitoring System Certification for the Permanent Disposal Pond 5 (PDP 5) located at the Martin Lake Steam Electric Station (MLSES) in Rusk County, Texas. PDP 5 is used to store coal combustion residuals (CCRs) from other MLSES CCR surface impoundments during cleaning cycles and for storage of water from large precipitation events and excess process wastewater from the MLSES flue gas desulfurization (FGD) system (scrubber gypsum) and bottom ash transport systems. PDP-5 is active and is considered an Existing CCR Surface Impoundment under 40 C.F.R. Part 257, Subpart D (the CCR Rule).

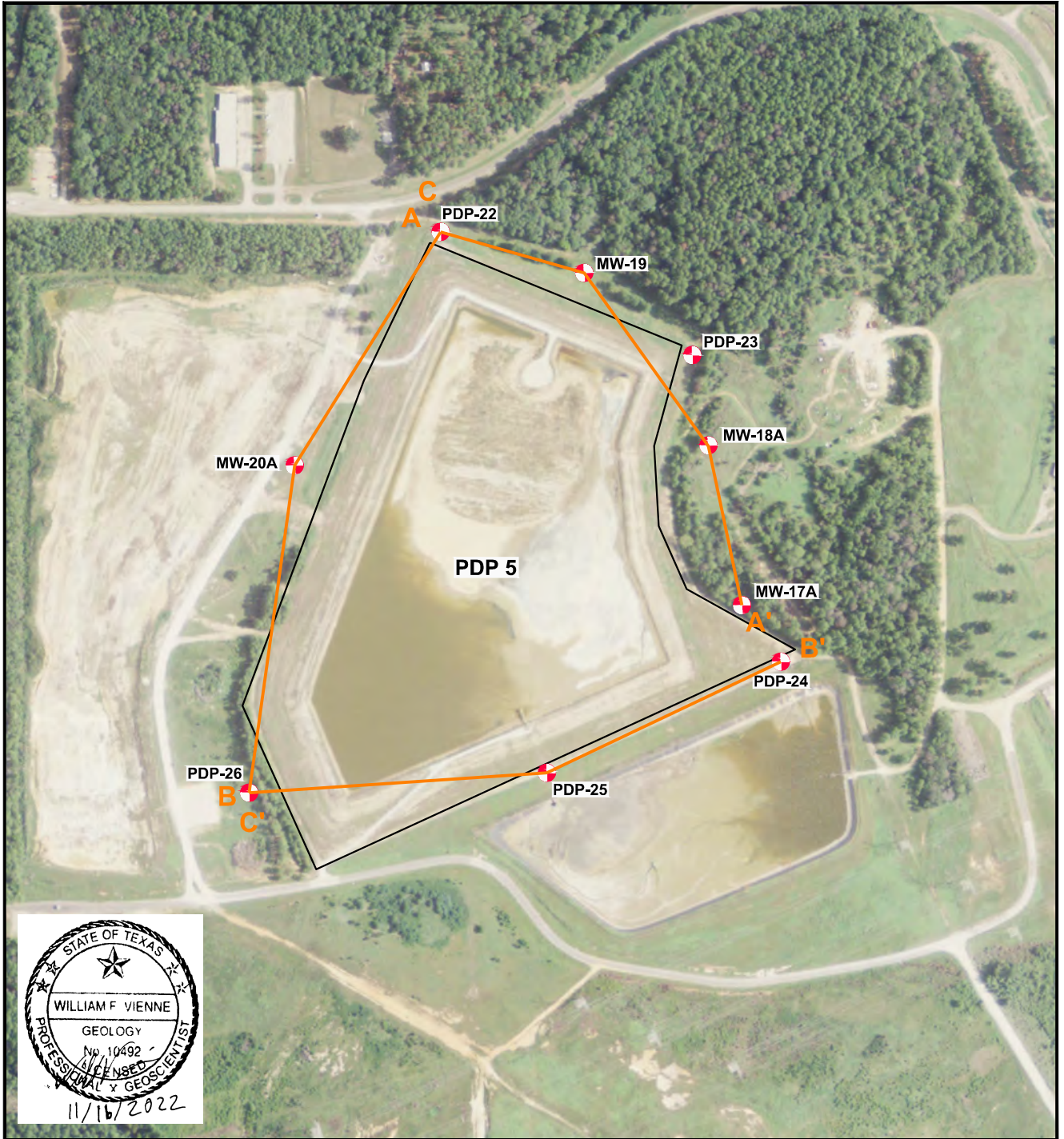
2.0 SUMMARY OF UPDATES

The original Groundwater Monitoring System Certification for PDP 5 was prepared in October 2017 in accordance with 40 C.F.R. §257.91 and placed in the MLSES operating record in accordance with 40 C.F.R. §257.105 (PBW, 2017). This Addendum No. 1 provides the cross section location map that was missing in the original report (Figure 1), an updated cross section location map (Figure 2), and updated cross sections that include additional construction information for PDP 5 and other closed and capped pre-CCR Rule coal ash surface impoundments (PDP 1 through 4) that are located immediately adjacent to PDP 5 (Figure 3 and 4).



3.0 REFERENCES

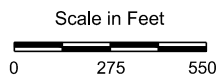
Pastor, Behling & Wheeler, LLC (PBW), 2017. CCR Groundwater Monitoring System Certification – PDP 5, Martin Lake Steam Electric Station, Rusk County, Texas.

FIGURES



EXPLANATION

-  CCR Monitoring Well
-  A—A' Geologic Cross Section Location Lines



SOURCE:
Imagery from www.tnris.gov, Rusk County, aerial photographs, 2012.

**MARTIN LAKE STEAM ELECTRIC STATION
TATUM, TEXAS**

Figure 1

**PDP-5
CROSS SECTION LOCATION MAP**

PROJECT: 5164B

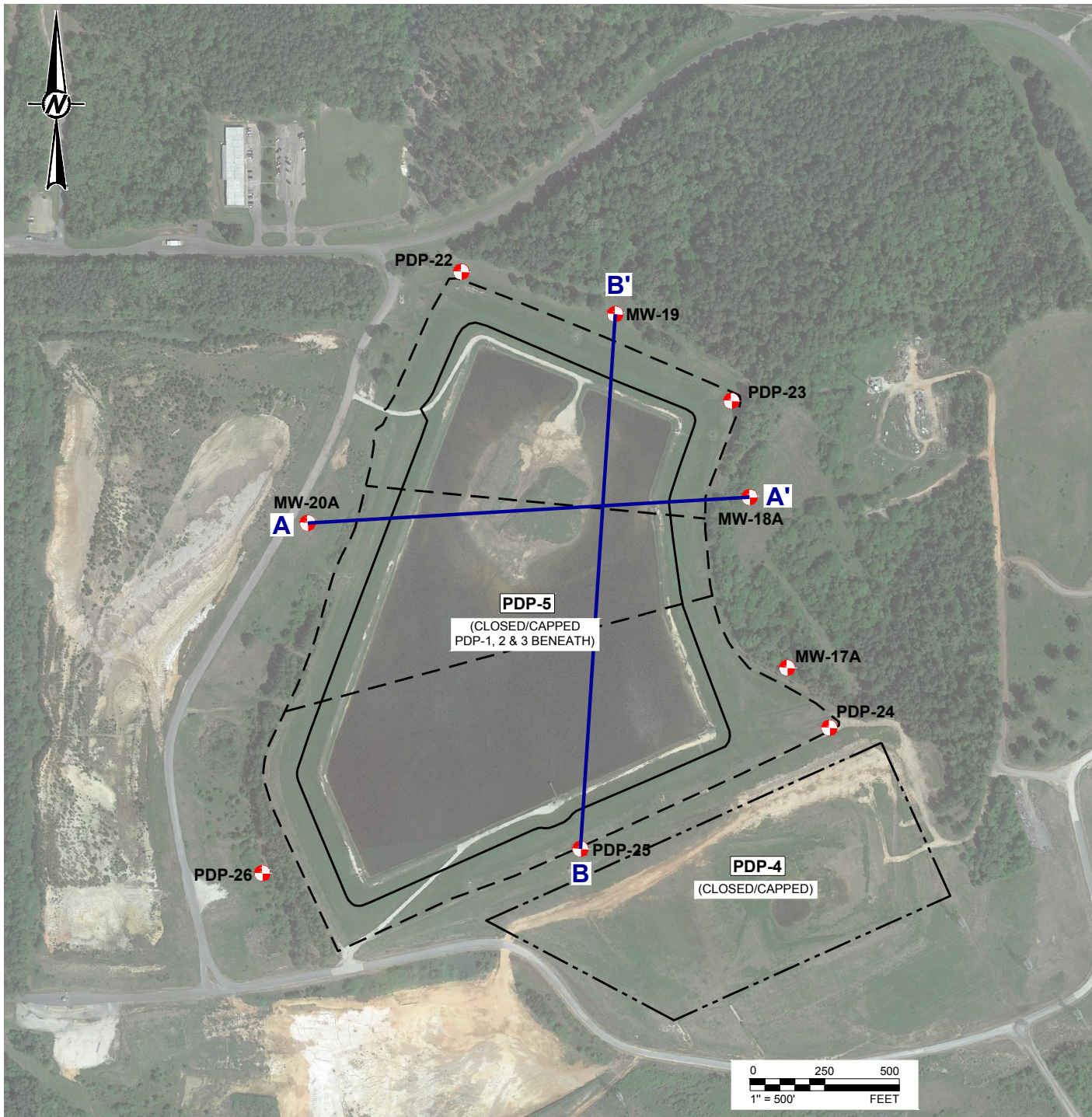
BY: AJD

REVISIONS






DATE: SEPT., 2017

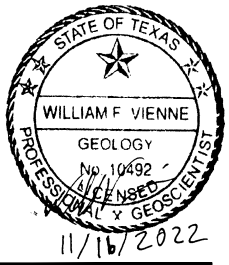
CHECKED: PJB





LEGEND

-  CCR MONITORING WELL
-  APPROXIMATE EXTENT OF CLOSED PDP 1, 2 & 3
-  EXTERIOR TOE OF PDP-5 BERMS
-  APPROXIMATE EXTENT OF CLOSED PDP-4
-  A — A' GEOLOGIC CROSS SECTION LOCATION LINES



CLIENT
LUMINANT GENERATION COMPANY LLC

PROJECT
MARTIN LAKE STEAM ELECTRIC STATION PDP-5

TITLE
UPDATED CROSS SECTION LOCATION MAP

CONSULTANT



YYYY-MM-DD	2021-11-09
DESIGNED	AJD
PREPARED	AJD
REVIEWED	PJB
APPROVED	PJB

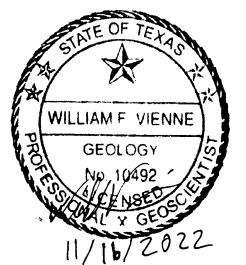
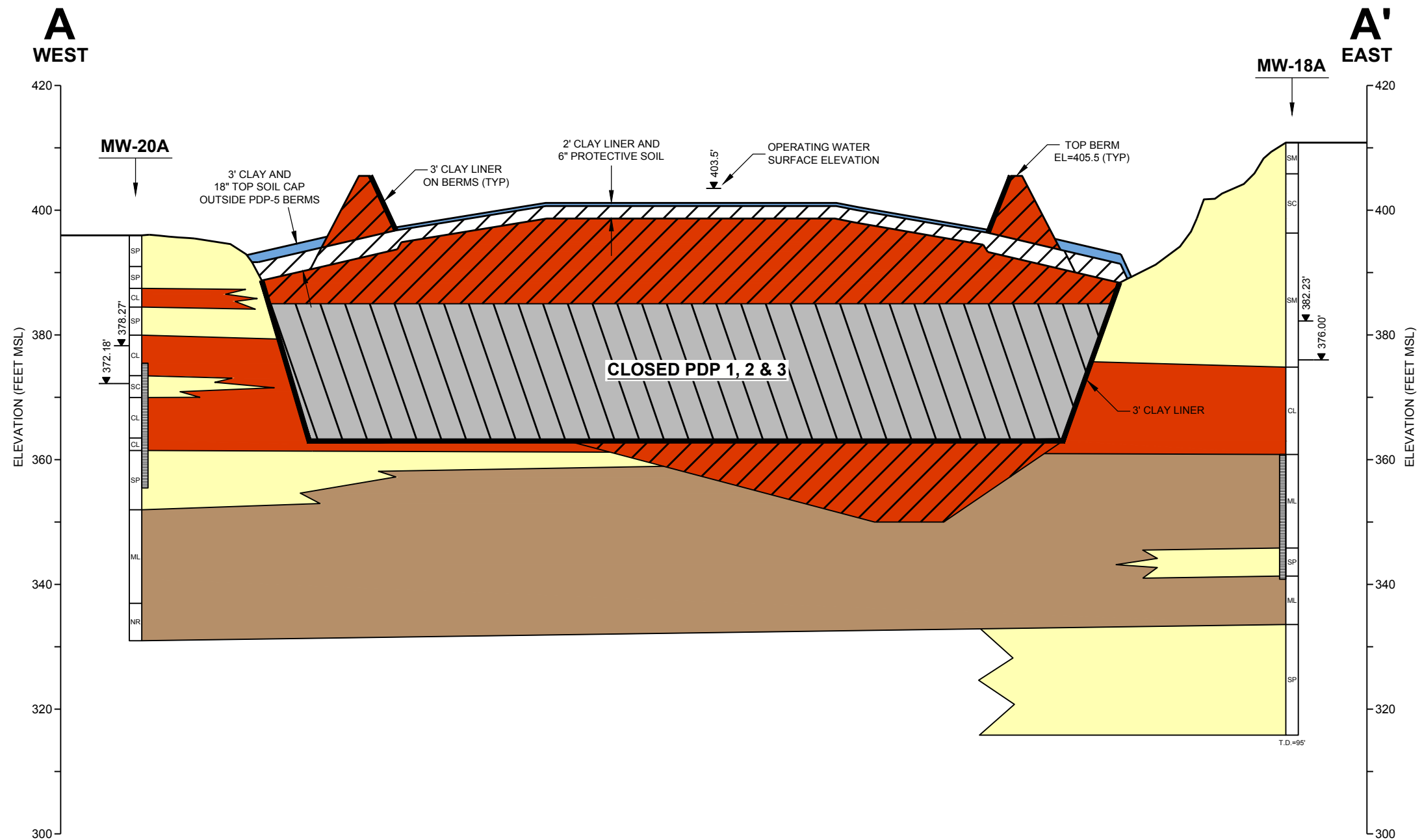
REFERENCE(S)
BASE MAP TAKEN FROM GOOGLE EARTH, IMAGERY DATED 4/9/19.

PROJECT NO. CONTROL
31404097.007

REV. 0

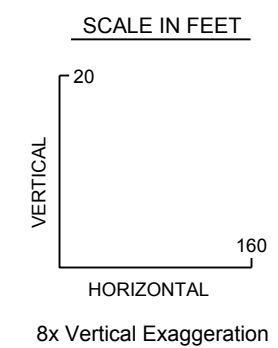
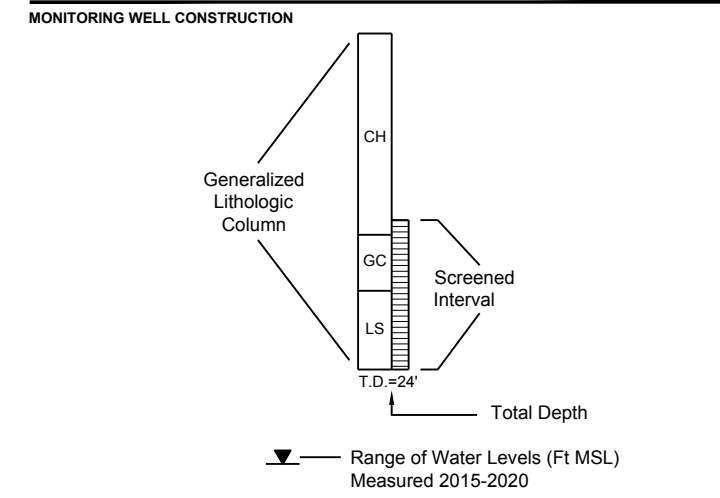
FIGURE 2

Path: \\golder-gbl.com\projects\offshore\Tombstone\Projects - Round Rock_2020\314271 - LuminantPRODUCTION\PDPS - 1 File Name: 4-Cross Section.dwg | Last Edited By: adiamond | Date: 2021-11-19 11:46:48 AM | Printed By: adiamond | Date: 2021-11-19 11:46:47 AM



LEGEND

	SAND
	CLAY
	SILT
	TOP SOIL
	CLOSED PDP 1, 2 & 3
	PDP-5 CLAY LINER AND CLOSED PDP 1, 2 & 4 CLAY CAP
	FILL

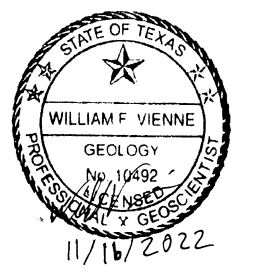
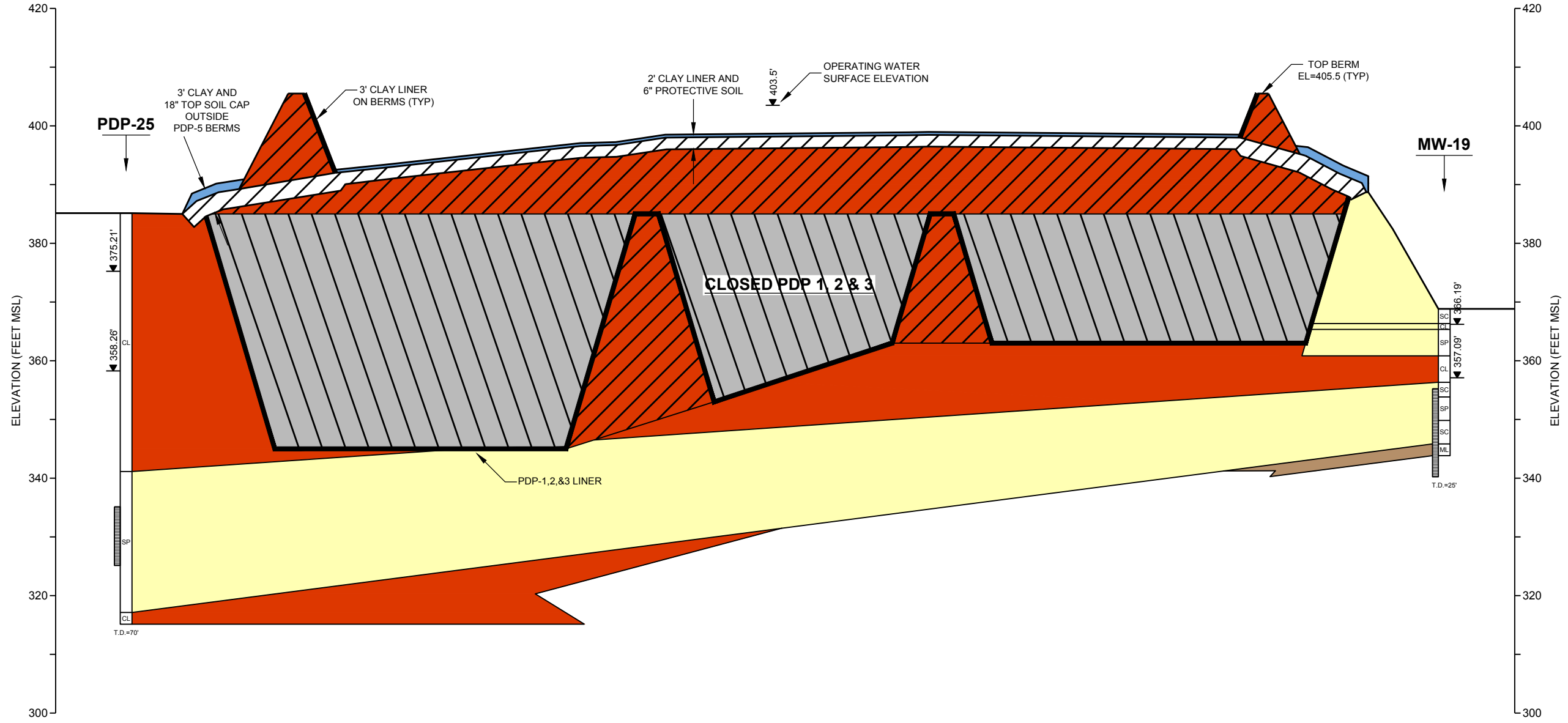


CLIENT		LUMINANT GENERATION COMPANY LLC	
PROJECT		MARTIN LAKE STEAM ELECTRIC STATION PDP-5	
TITLE		GEOLOGIC CROSS SECTION - A-A'	
CONSULTANT	YYYY-MM-DD	2021-11-09	
	DESIGNED	AJD	
	PREPARED	AJD	
	REVIEWED	PJB	
	APPROVED	PJB	
PROJECT NO.	CONTROL	REV.	FIGURE
31404097.007		0	3

1 in. IF THIS MEASUREMENT DOES NOT MATCH WHAT IS SHOWN, THE SHEET SIZE HAS BEEN MODIFIED FROM ANSI B

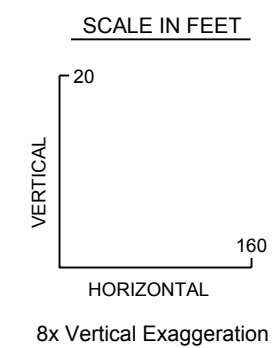
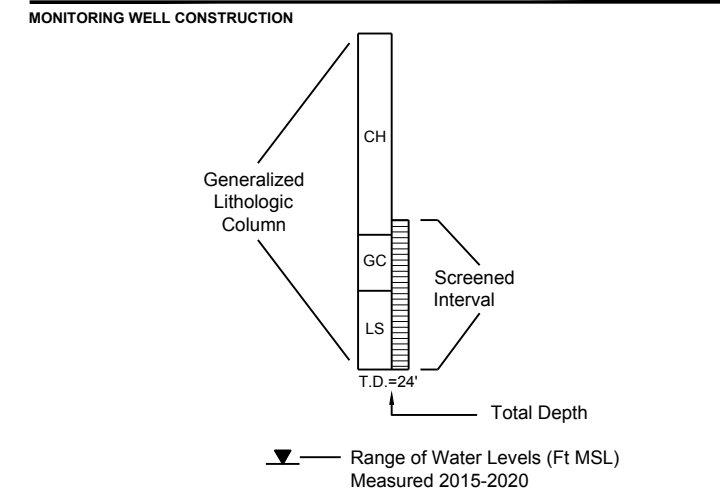
B
SOUTH

B'
NORTH



LEGEND

	SAND
	CLAY
	SILT
	TOP SOIL
	CLOSED PDP 1, 2 & 3
	PDP-5 CLAY LINER AND CLOSED PDP 1, 2 & 4 CLAY CAP
	FILL



CLIENT		LUMINANT GENERATION COMPANY LLC	
PROJECT		MARTIN LAKE STEAM ELECTRIC STATION PDP-5	
TITLE		GEOLOGIC CROSS SECTION - B-B'	
CONSULTANT	YYYY-MM-DD	2021-11-09	
	DESIGNED	AJD	
	PREPARED	AJD	
	REVIEWED	PJB	
	APPROVED	PJB	
PROJECT NO.	CONTROL	REV.	FIGURE
31404097.007		0	4

Path: \\golder-gbl.com\projects\martinlake\pdp5 - Round Rock - 2020\314271 - LuminantPRODUCTION\PDP5 - 1 File Name: 4-Cross Section.dwg | Last Edited By: adiamond | Date: 2021-11-19 Time: 2:41:19 PM | Printed By: adiamond | Date: 2021-11-19 Time: 2:41:19 PM

1 in. IF THIS MEASUREMENT DOES NOT MATCH WHAT IS SHOWN, THE SHEET SIZE HAS BEEN MODIFIED FROM ANSI B